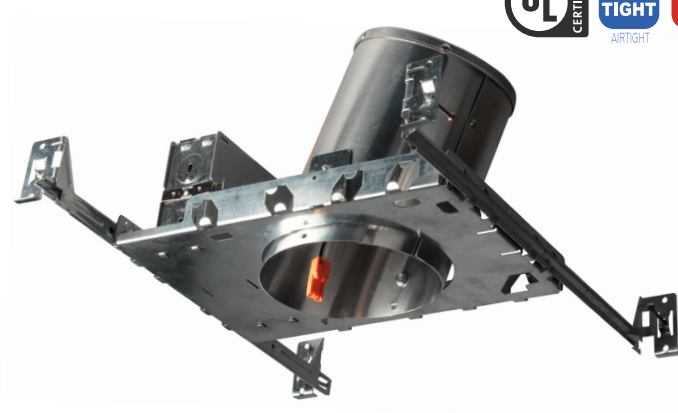
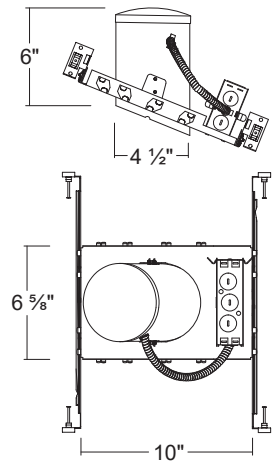


LED490ICA / LED490ICA-01V

4" Slope IC Air-Tight LED Dedicatd New construction Housing



Dimensions



SPECIFICATION

Housing

- Designed for use in ceiling with slopes from 2/12 to 6/12

Plaster Frame

- Galvanized steel construction. The housing can be removed from plaster frame to provide access to the junction box

Junction Box

- Listed for through branch circuit wiring
- Contains seven 7/8" knockouts and four Romex pryouts with strain relief

Bar Hanger

- Pre-installed Real nail easily installs in regular lumber, engineered lumber
- Bar Hangers are adjustable from 13-5/8" to 25" and can be repositioned 90 degree on plaster frame

Listings

- cULus Listed for Damp Location
- cULus Listed for Feed Through
- Certified under ASTM-E283 for Air tight construction

CONNECTOR

LED490ICA

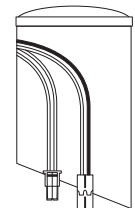
Triac Dimming Ver.



Ideal connector

LED490ICA-01V

0-10V Dimming Ver.



Molex connector Ideal connector

ORDERING INFORMATION

Model No.	Dimming	Description
LED490ICA	Triac Dimming	4" Slope IC Air-Tight Dedicated New construction Housing
LED490ICA-01V	0-10V Dimming	4" Slope IC Air-Tight Dedicated New construction Housing

COMPATIBLE TRIMS

LED490ICA

Model NO.

SLKT400
SLKT403
SLKT400-3CCT
SLKT403-3CCT
SLKT400-5CCT
SLKT403-5CCT

Description

4 inch LED Slope Round Smooth Retrofit kit
4 inch LED Slope Round Baffle Retrofit kit
4 inch Selectable 3 CCT LED Slope Round Smooth Retrofit kit
4 inch Selectable 3 CCT LED Slope Round Baffle Retrofit kit
4 inch Selectable 5 CCT LED Slope Round Smooth Retrofit kit
4 inch Selectable 5 CCT LED Slope Round Baffle Retrofit kit

LED490ICA-01V

Model NO.

SLKT400-5CCT-M
SLKT403-5CCT-M

Description

4 inch Selectable 5 CCT LED Slope Round Smooth Retrofit kit
4 inch Selectable 5 CCT LED Slope Round Baffle Retrofit kit



L-TECH CORPORATION
www.L-Techcorp.com

CHINA : SHAOGANGTOU DISTRICT, QIAOTOU TOWN, DONGGUAN CITY, GUANGDONG 523536
TEL : 86-769-83423455 / FAX : 86-769-83423173 E-mail : ltech@vip.163.com

KOREA : A-1804, WOOLIM BLUE NINE, 240-21, YEOMCHANG-DONG, GANGSEO-GU, SEOUL, 157-779
TEL : 82-2-2666-2917~8 / FAX : 82-2-2666-7052 E-mail : ltech77@ltechcorp.com